



Spring 2022 School Quality Survey Results

November 10, 2022 Regular Board Meeting

Purpose of the Study

- 4th annual survey of all families, staff and secondary students on dimensions of District, school quality and climate
- Information builds on previous data, while providing annual benchmark for our work moving forward
- Identify great work happening across District and identify opportunities for growth

Purpose of the Study

Focus Areas:

- Overall District Quality
- Overall School Quality
- Academic Support
- Student Support
- School Leadership
- Family Involvement
- Safety and Behavior
- Communication and Community Building
- Special Education
- Section 504
- News and Information

New topics added in 2021-2022:

- Social Emotional Learning

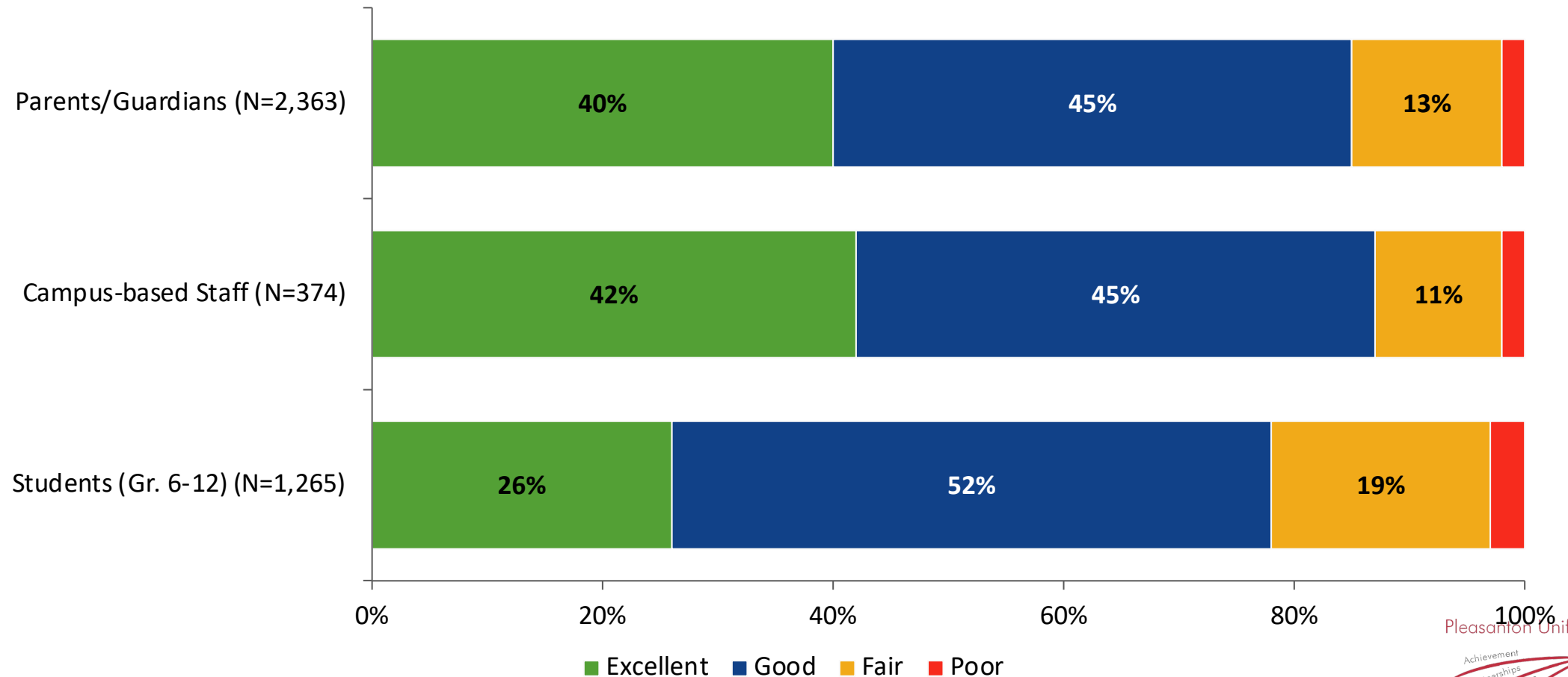
Participation

Group	Participants
Parent-Guardian/Community	2,404/47
Staff	442
Students	1,269
Total	11,706

Language of Participation	2021-2022	2020-2021
English	2,220	2,498
Chinese	128	90
Spanish	56	30

Overall School Quality: Comparison by Respondent Type

How would you rate the overall quality of your child's/your school?

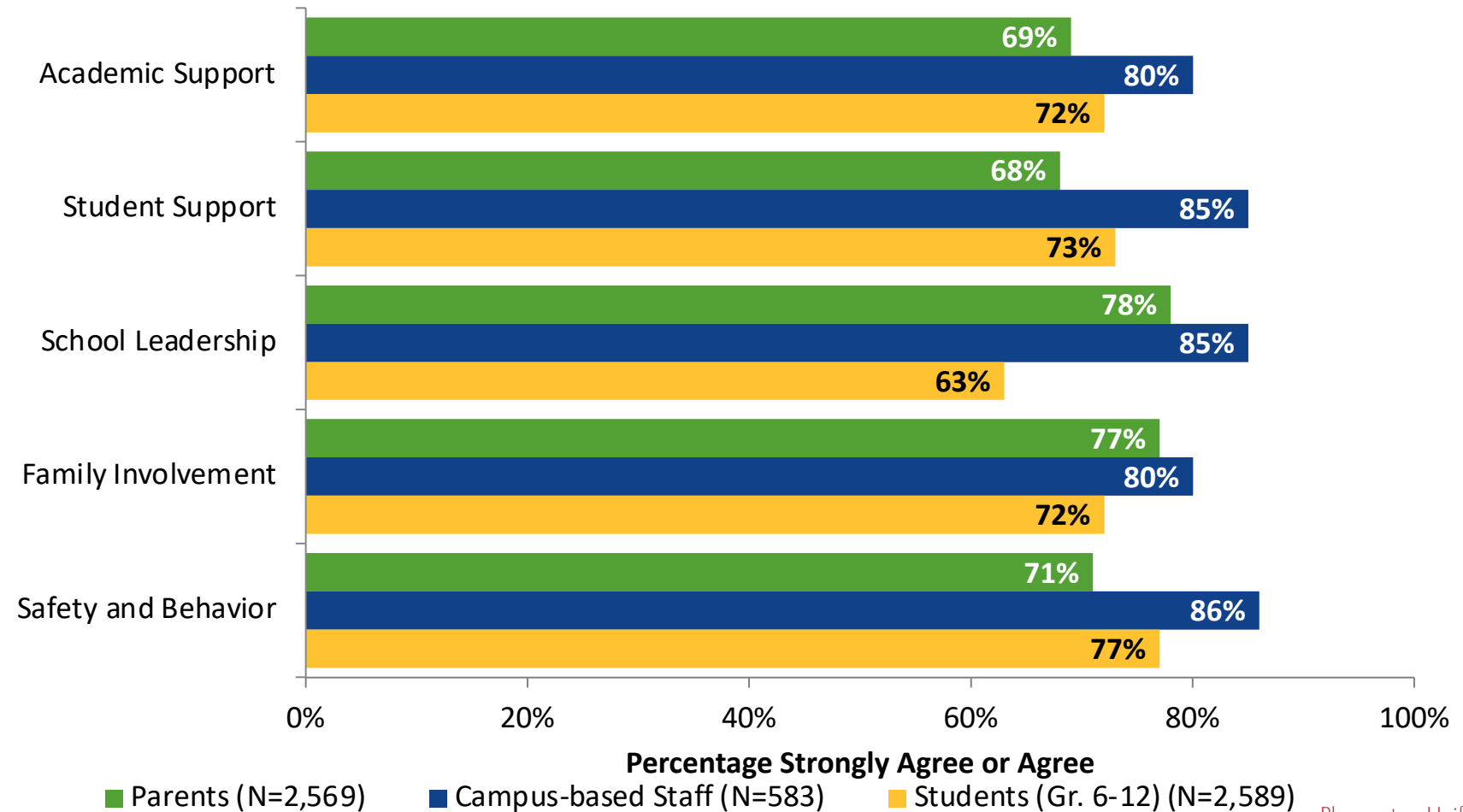


Pleasanton Unified School District



11/10/2022
Page 5 of 24

School Quality Dimension Scores By Participant Group



Answer options: Strongly Agree, Agree, Disagree, Strongly Disagree, Don't Know

Note: This graph shows Strongly Agree or Agree responses for all items within each dimension.

Areas of Celebration

% Strongly Agree/Agree

Family Engagement 91%

Families are encouraged to attend school-sponsored activities, such as back to school night

Safety and Behavior 89%

This school is safe

Safety and Behavior 88%

Staff members and families treat each other with respect

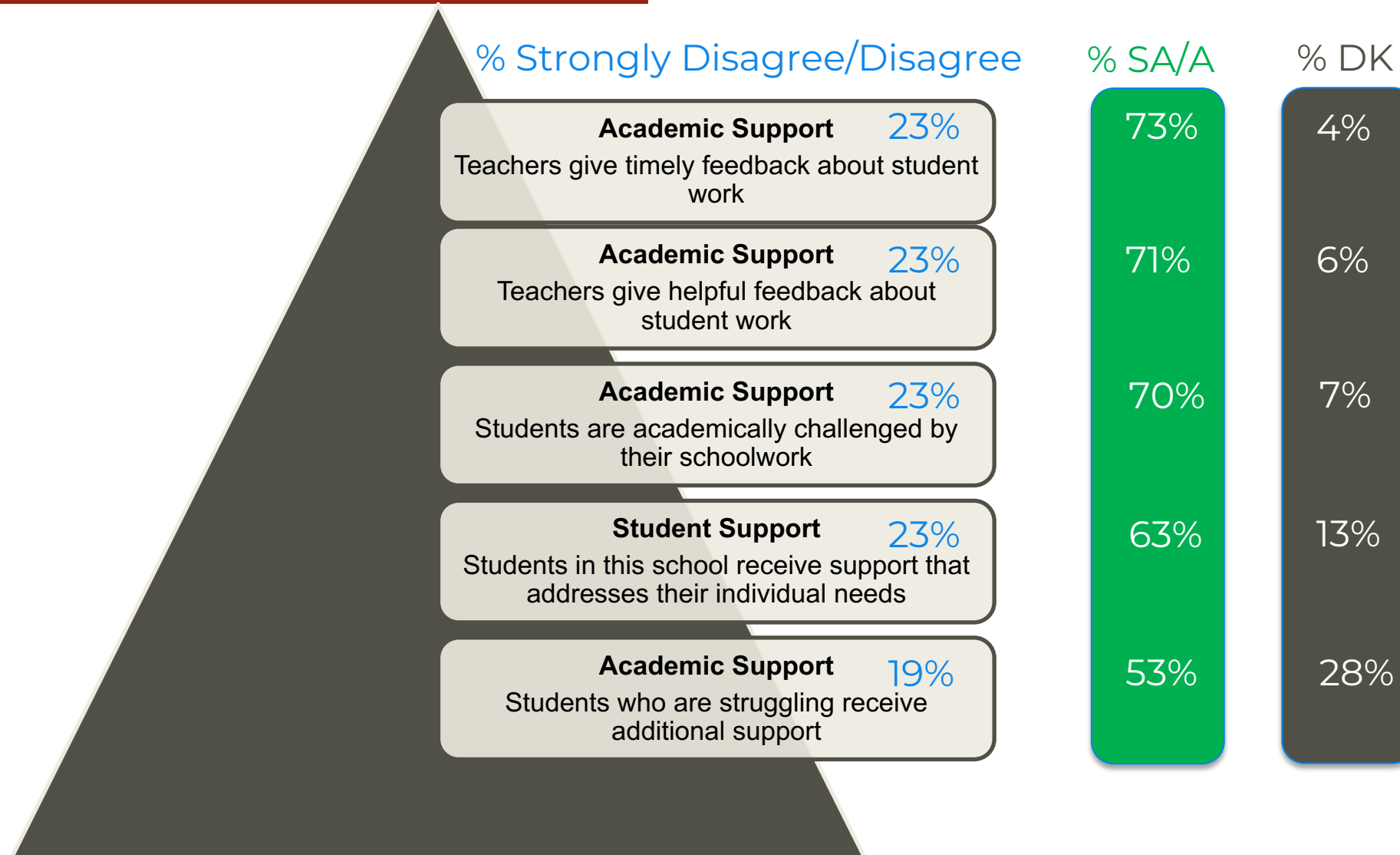
Family Engagement 86%

Families are informed about school-sponsored activities, such as tutoring, after-school programs, and student performances

Academic Support 85%

This school's learning standards and expectations are clearly explained to students

Opportunities for Growth



Areas of Celebration

% Strongly Agree/Agree

Student Support 97%

There is a teacher, counselor, or other staff member a student can go to for help with a school problem

Student Support 95%

There is a teacher, counselor, or other staff member a student can go to for help with a personal problem

School Leadership 93%

School administrators (Principals and Vice Principals) are courteous when I have a concern

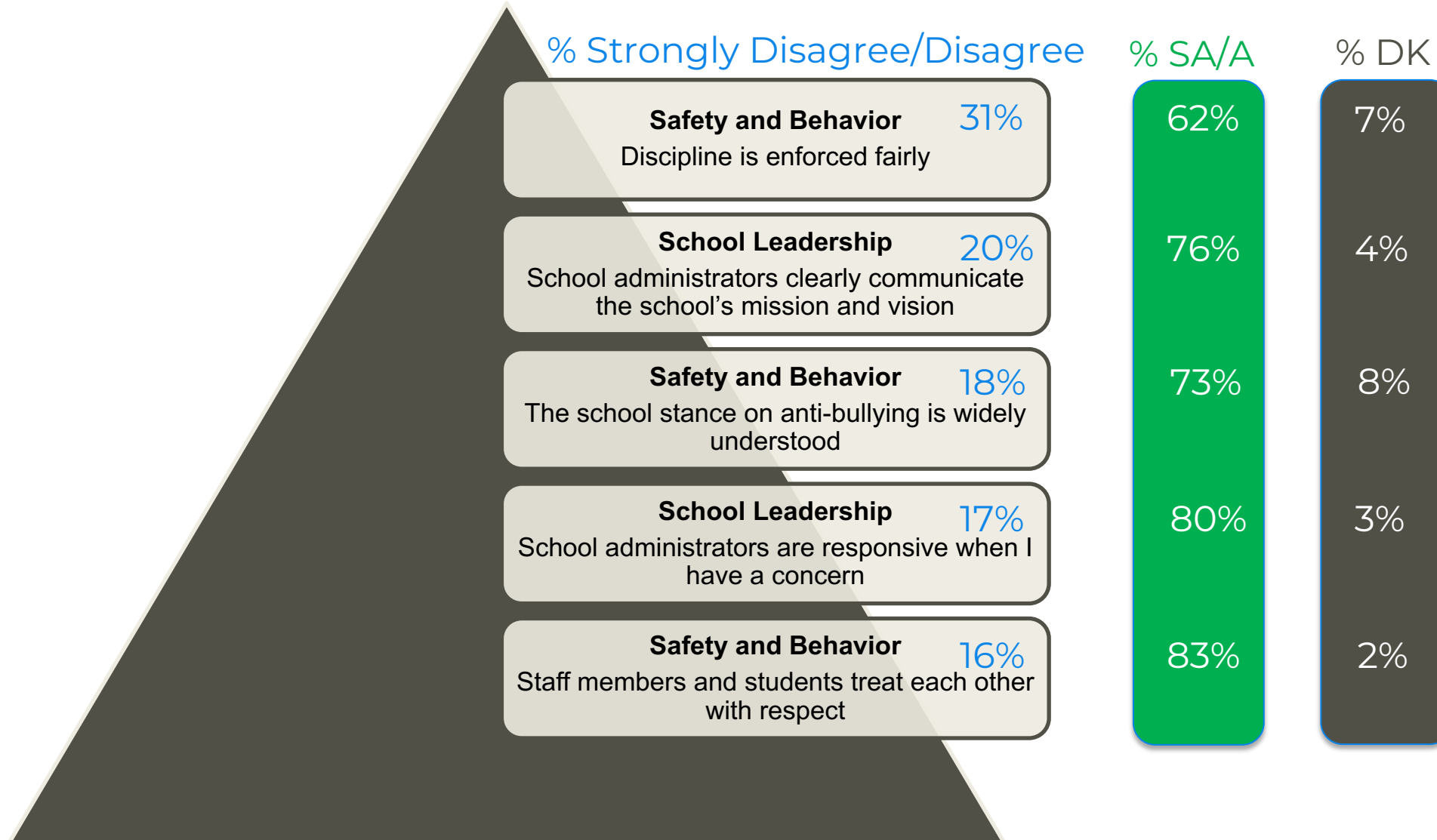
Academic Support 90%

This school's learning standards and expectations are clearly explained to students

Student Support 90%

There is a teacher, counselor, or other staff member a student can go to for help with a technology problem

Opportunities for Growth



Areas of Celebration

% Strongly Agree/Agree

Student Support

91%

There is a teacher, counselor, or other staff member to whom I can go to for help with a technology problem

Student Support

90%

There is a teacher, counselor, or other staff member to whom I can go to for help with a school problem

Academic Support

88%

This school's learning standards and expectations are clearly explained to students

Safety and Behavior

87%

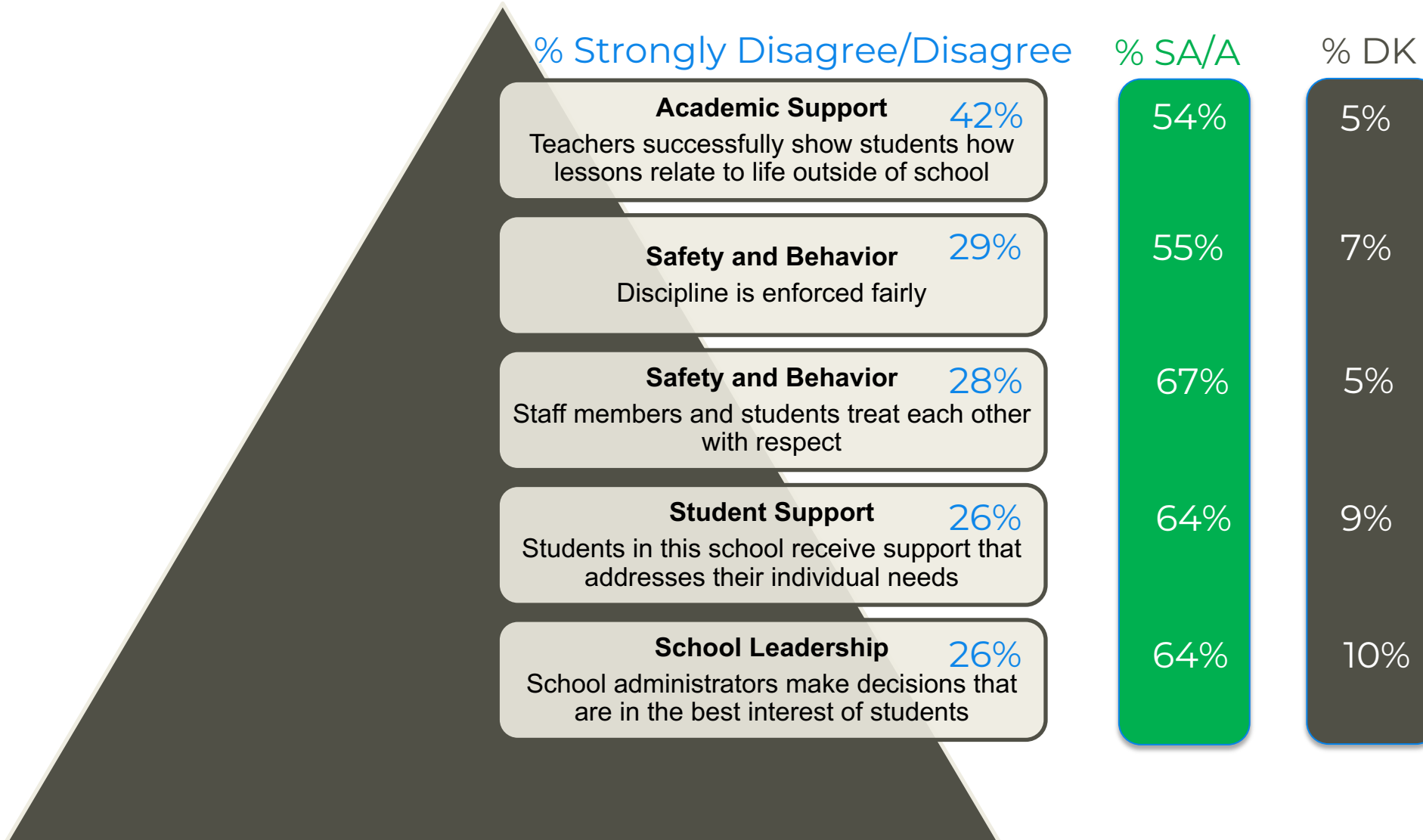
All school staff are aware of the safety and security procedures

Academic Support

85%

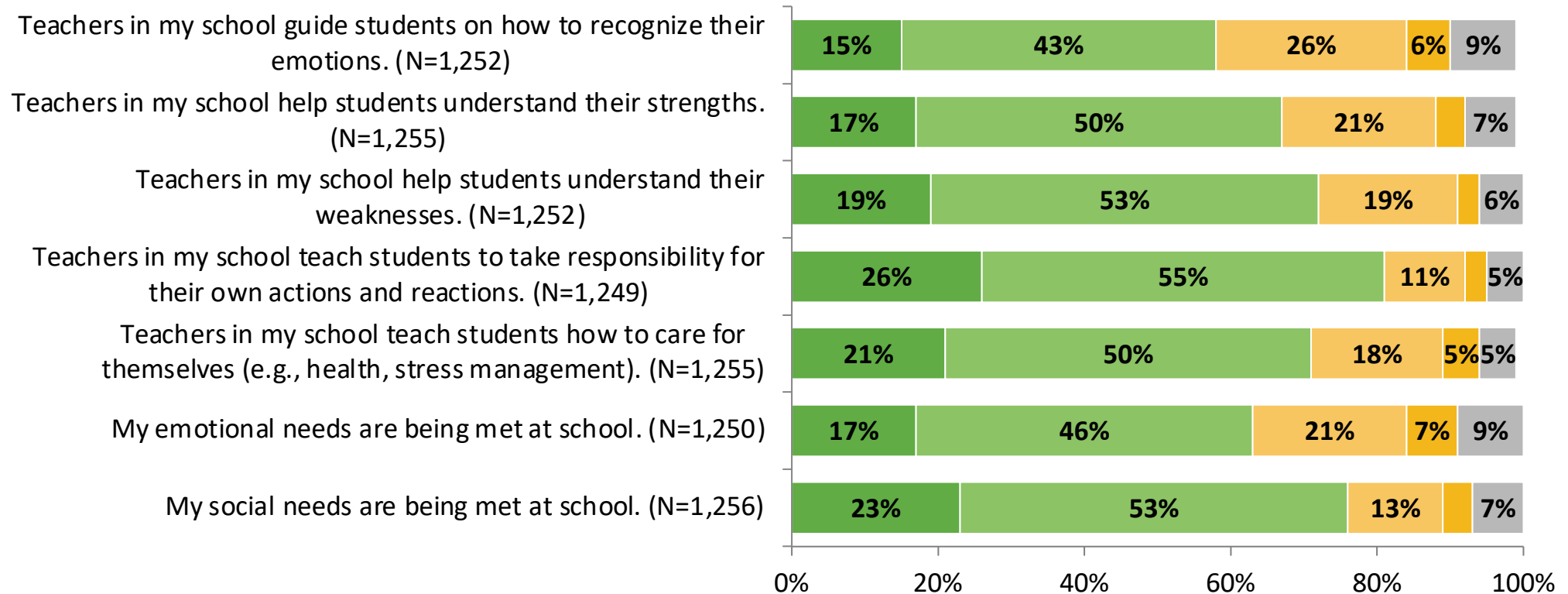
This school offers a variety of academic courses

Opportunities for Growth



NEW: Social Emotional Learning

How strongly do you disagree or agree with the following statements?



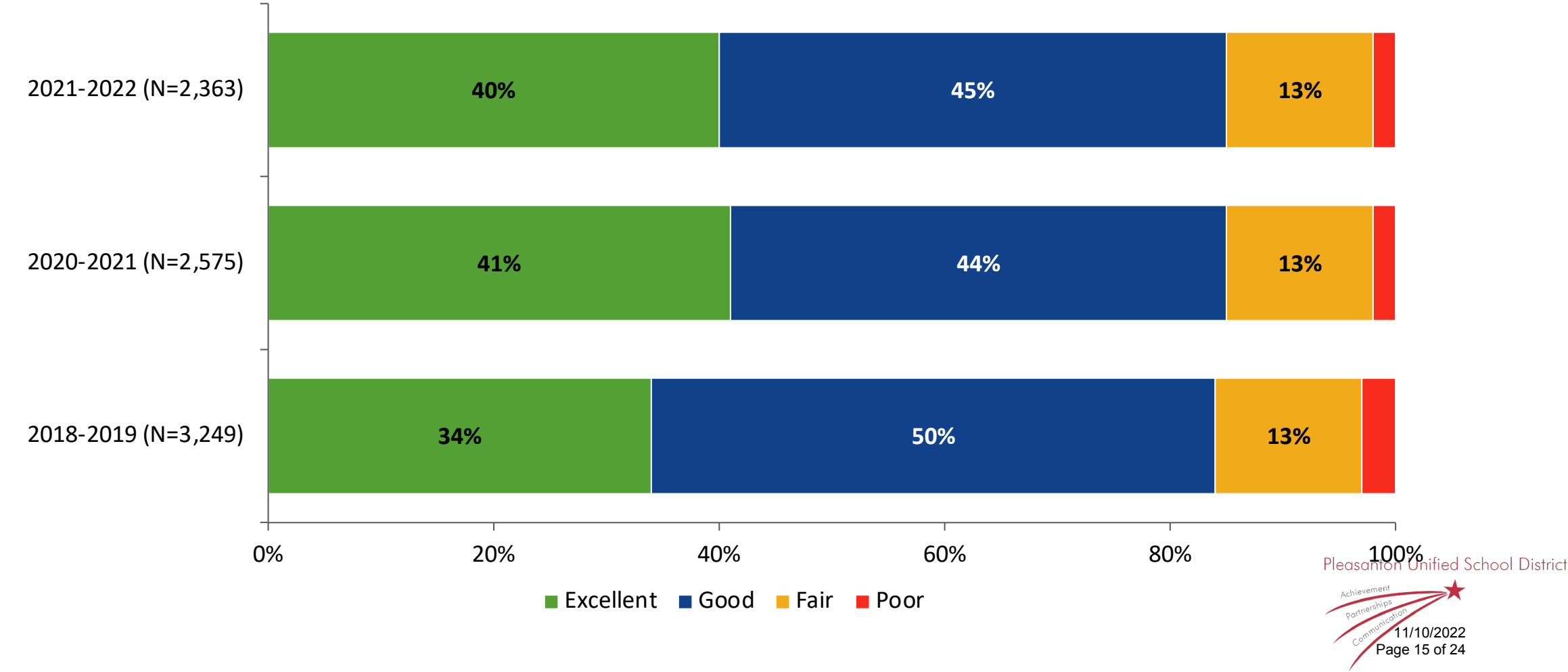
Strongly Agree Agree Disagree Strongly Disagree Don't Know



Year over Year Trends

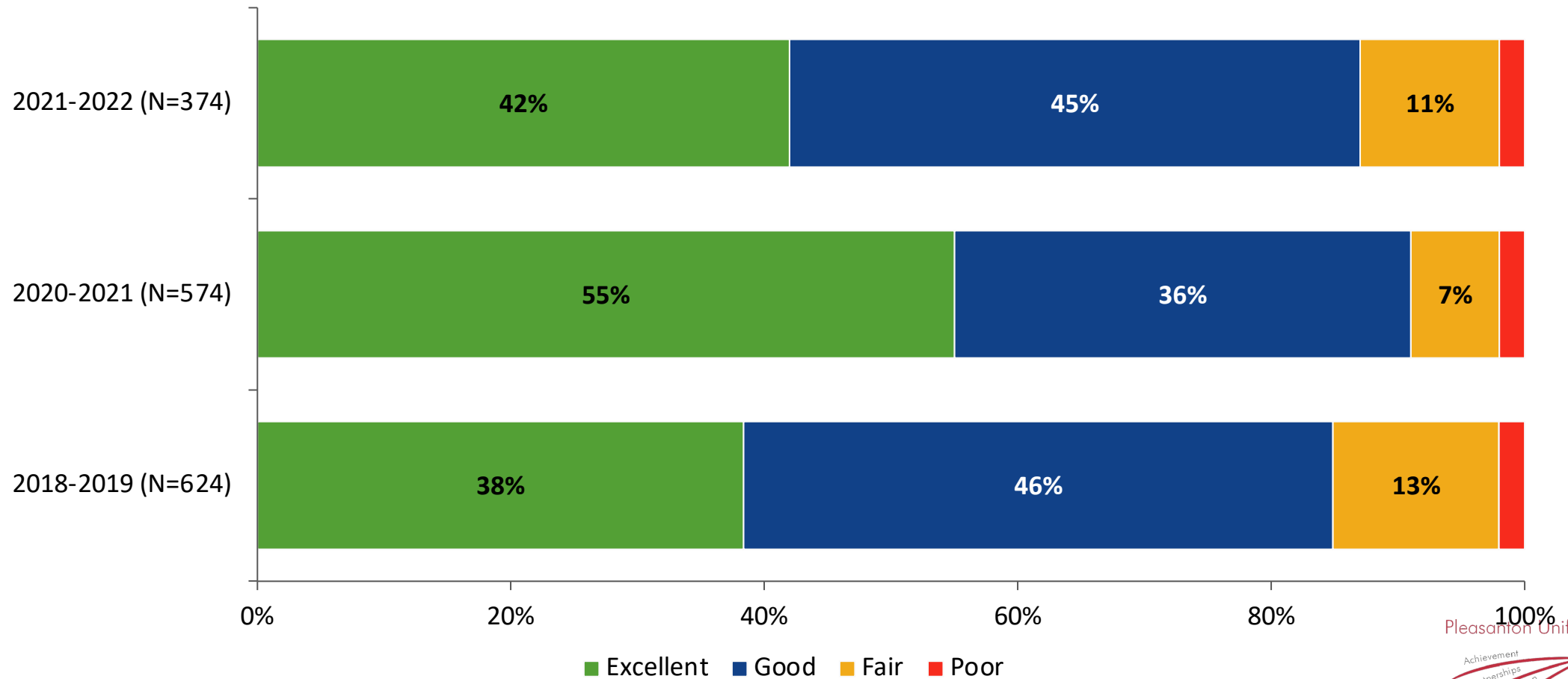
Overall School Quality: Comparison Over Time

How would you rate the overall quality of this school?



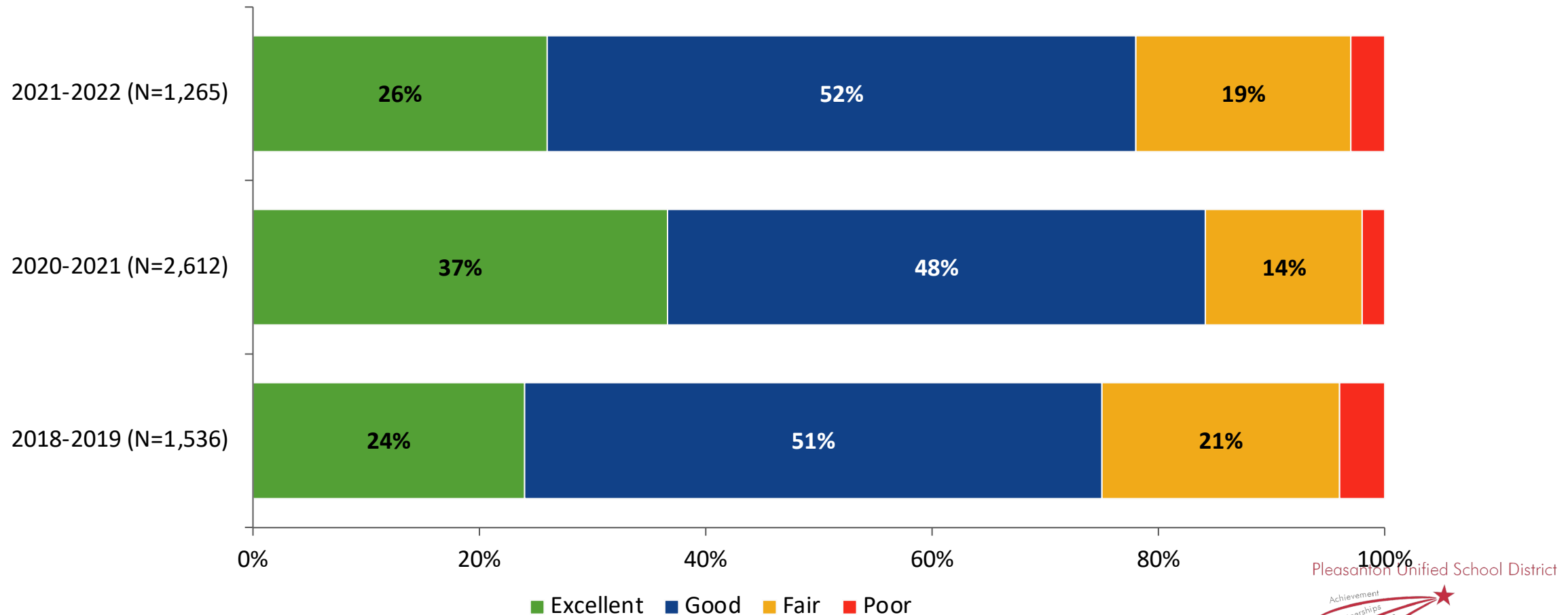
Overall School Quality: Comparison Over Time

How would you rate the overall quality of this school?

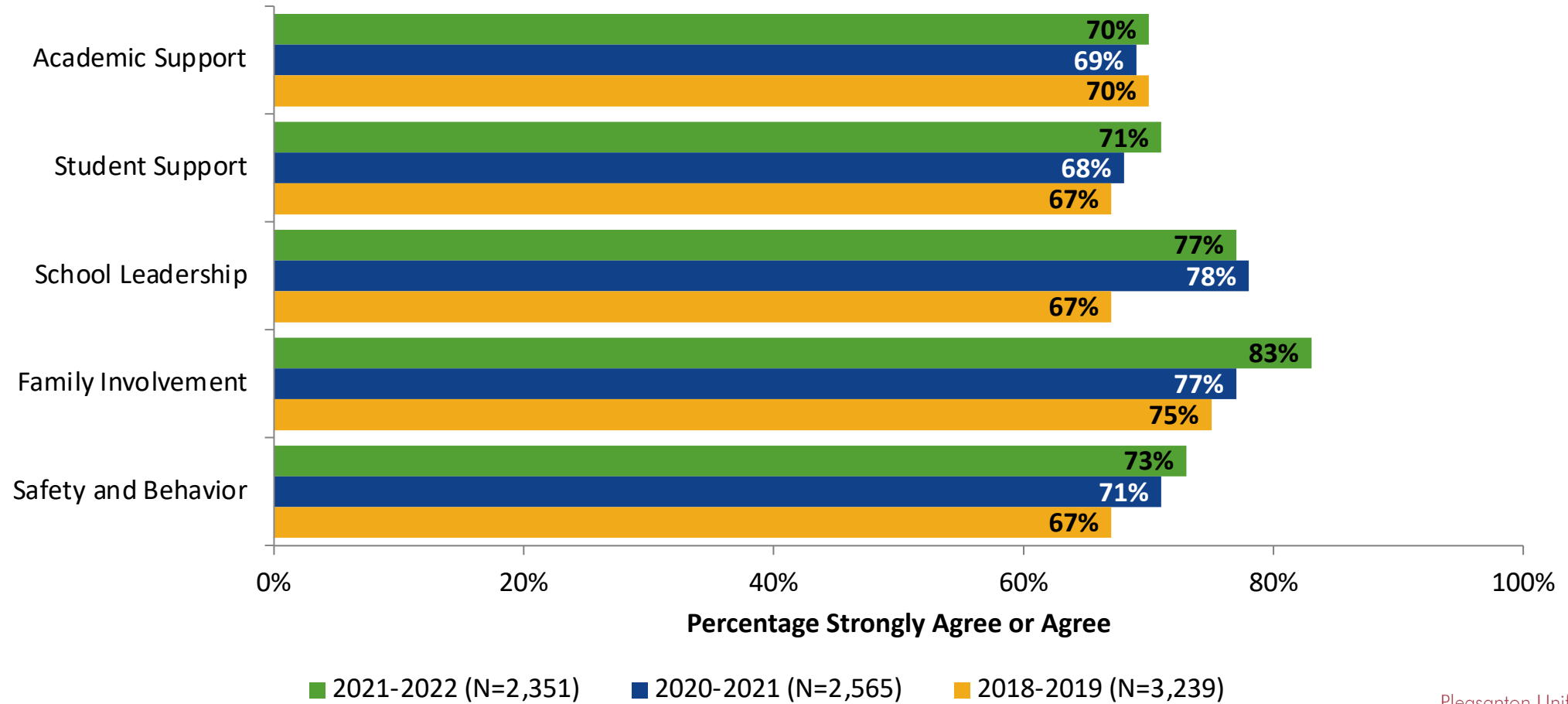


Overall School Quality: Comparison Over Time

How would you rate the overall quality of this school?



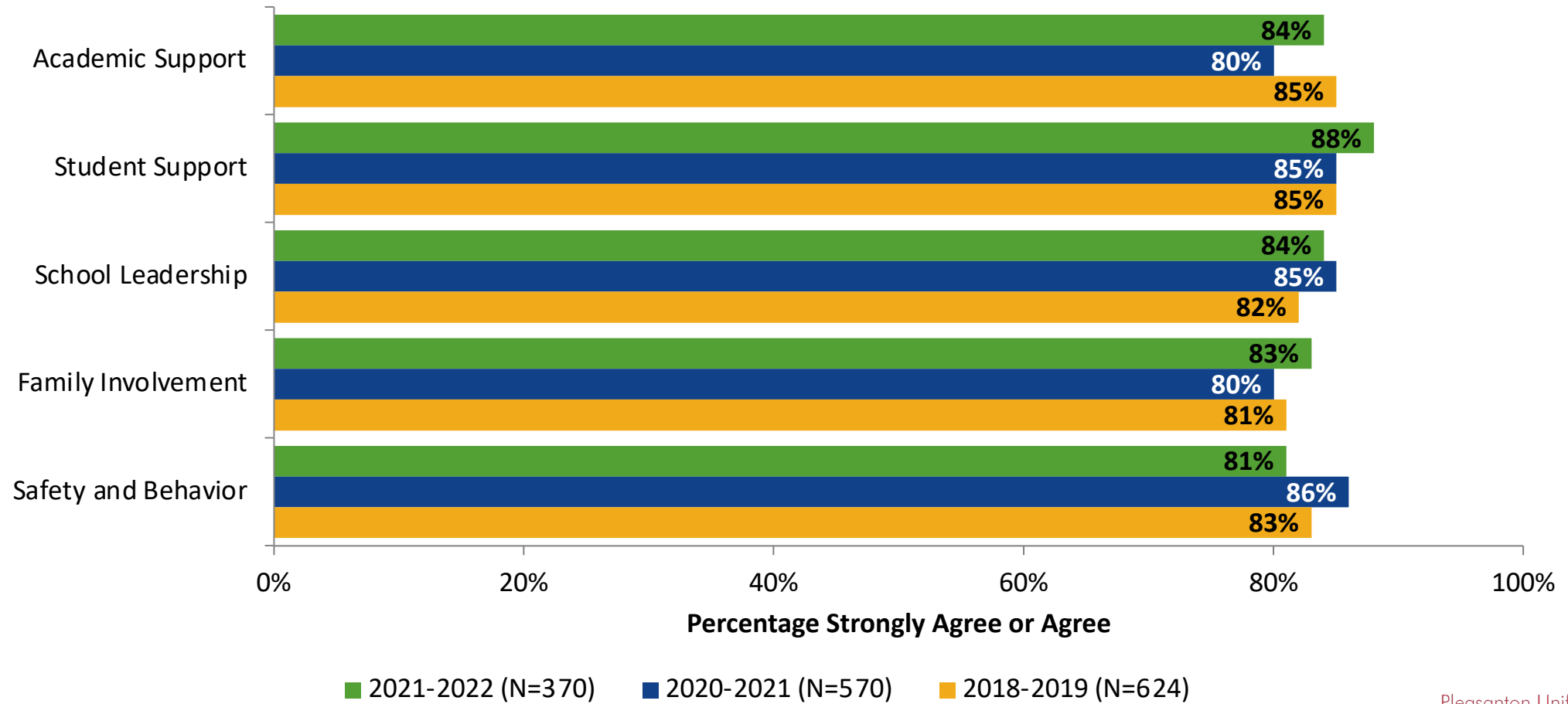
Dimension Scores: Comparison Over Time



Answer options: Strongly Agree, Agree, Disagree, Strongly Disagree, Don't Know

Note: This graph shows Strongly Agree or Agree responses for all items within each dimension.

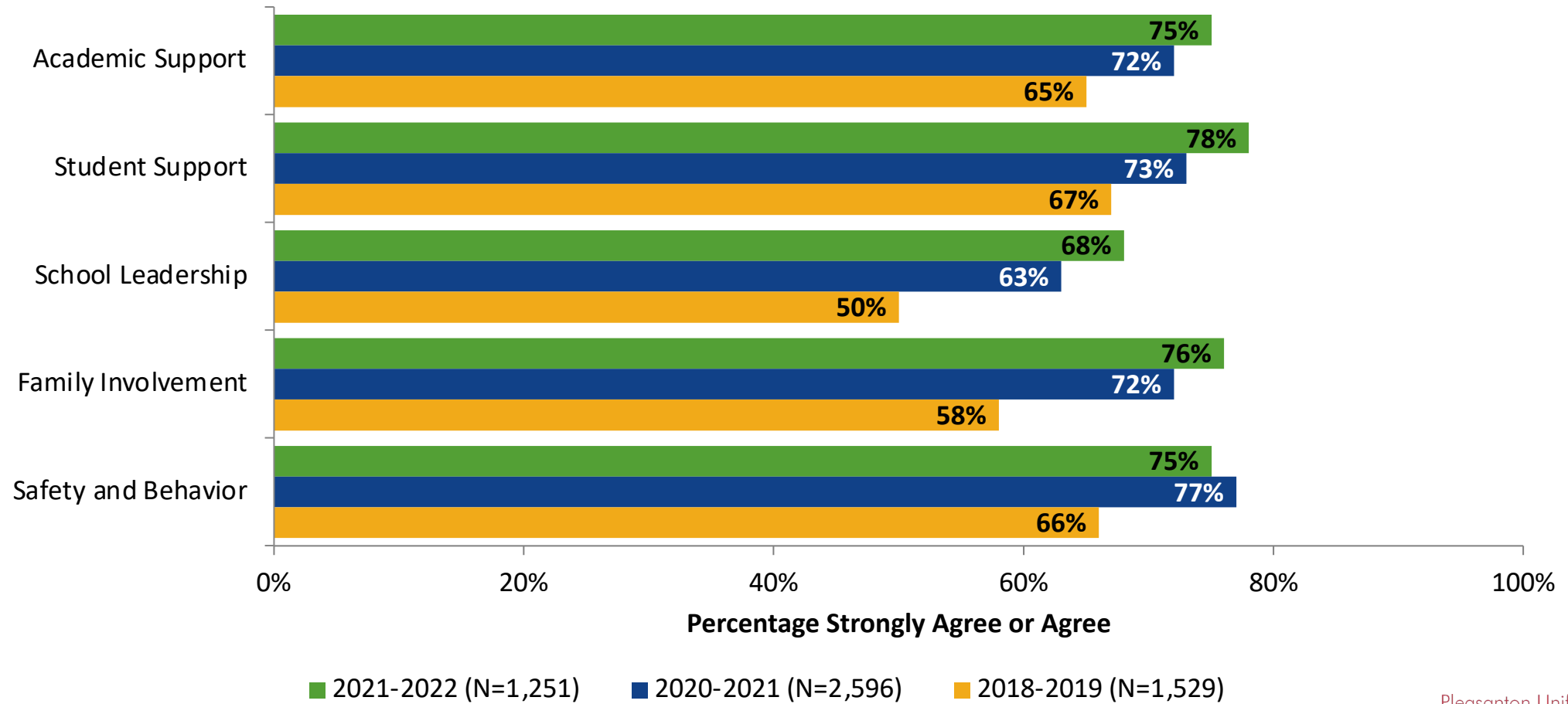
Dimension Scores: Comparison Over Time



Answer options: Strongly Agree, Agree, Disagree, Strongly Disagree, Don't Know

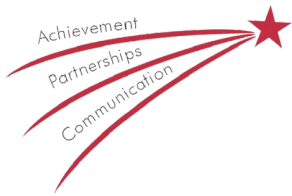
Note: This graph shows Strongly Agree or Agree responses for all items within each dimension.

Dimension Scores: Comparison Over Time



Answer options: Strongly Agree, Agree, Disagree, Strongly Disagree, Don't Know

Note: This graph shows Strongly Agree or Agree responses for all items within each dimension.



How Are We Doing? Opportunities for Growth (2020-2021)

Parents/Guardians

Students in this school receive support that addresses their individual needs.



Teachers give timely feedback about student work.



This school offers enrichment activities during the school day.



Staff

This school offers enrichment activities during the school day.



School administrators (principals and assistant principals) are responsive when I have a concern.



School administrators (principals and assistant principals) clearly communicate the school's mission and vision.

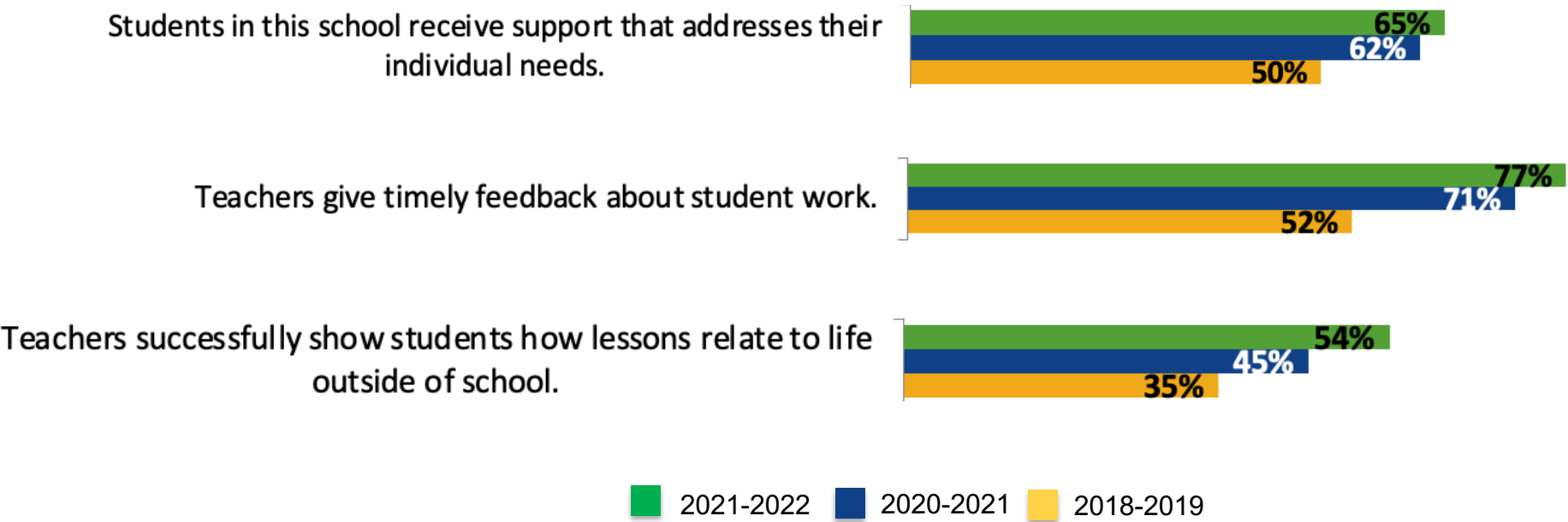


2021-2022 2020-2021 2018-2019

Answer options: Strongly Agree, Agree, Disagree, Strongly Disagree, Don't Know
Note: This graph shows Strongly Agree or Agree responses for all items within each dimension.

How Are We Doing? Opportunities for Growth (2020-2021)

Students (grades 6-12)



Answer options: Strongly Agree, Agree, Disagree, Strongly Disagree, Don't Know
Note: This graph shows Strongly Agree or Agree responses for all items within each dimension.

Key Takeaways

- Survey participant sentiment toward District and school quality has seen a net increase across all groups
- Continue to have many reasons to celebrate and areas for follow up in our work moving forward (academic & student support, communication & community building)
- Focus on increasing participation this year and continue to pay attention to if/how data changes for areas of growth/celebration
- Ongoing conversations will be helpful for fully understanding the data and developing action plans
- PUSD Goals and Organizational Work Plan is well aligned for areas for growth